

Hungry Point Reserve Land Manager

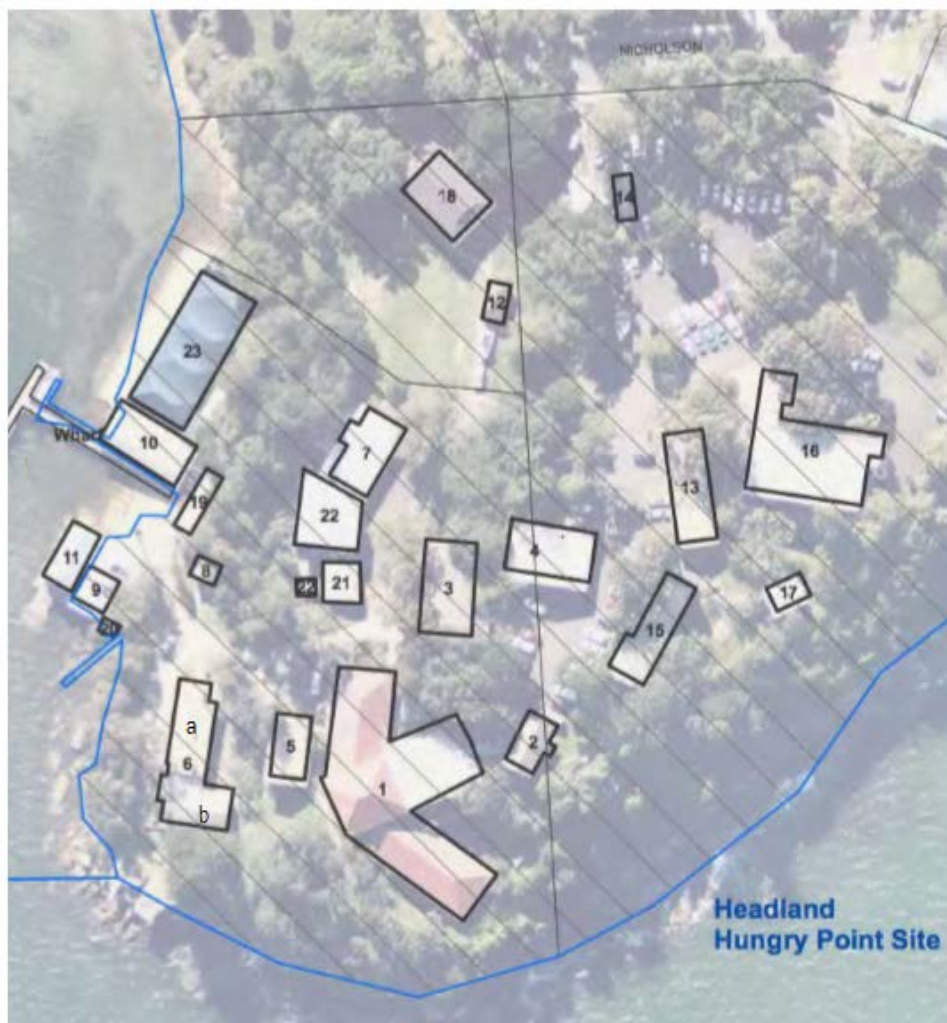
Current Status of Buildings and Facilities

A. Currently Occupied

- Marine Rescue NSW, under Licence granted by the Minister, occupies Buildings 1, 2 and 22 and “Premium car parking” as it is described in Schedule 3 of the Lease.
- The local MRNSW unit also under licence granted by the Minister, occupies Buildings 3,5,9,11. Also berthing area and the car park, the northern section of which is now turfed.
- Marine Stewardship Council under licence for Building 6b (cottage) granted by HPRLM
- Cronulla Surf Life Saving Club under licence for parts of Building 16 granted by HPRLM, due to vacate second half of 2019
- Sutherland Shire Historical Society under licence for Building 4 granted by HPRLM, until November 2019.

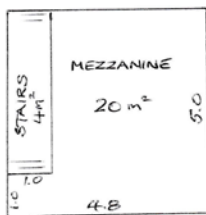
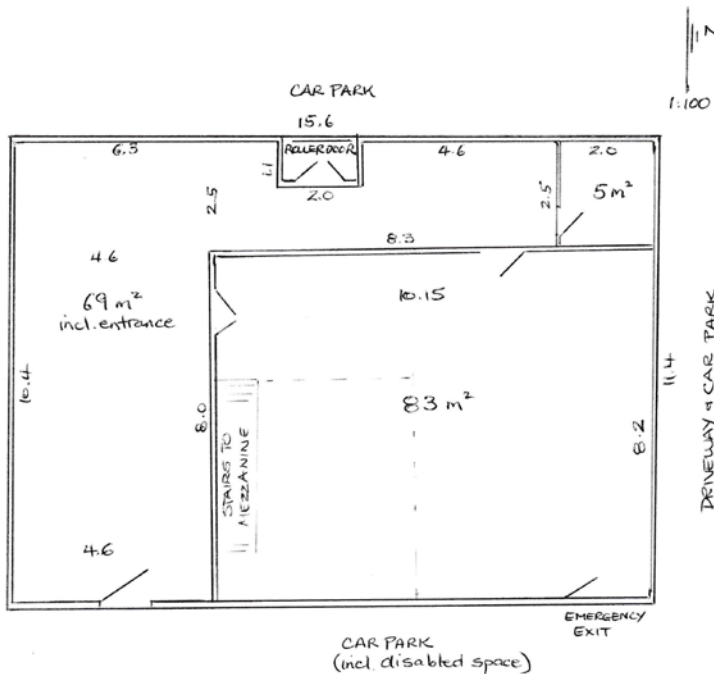
B. Buildings and facilities available under the current Expressions of Interest process

Buildings 4, 6a (laboratory), 7, 10, 13, 15, 16, 19, 23 (pool)



Plan not to scale. Note that buildings 12, 14, 17 and 18 have been demolished


No.	Building Name	HERITAGE listed?	Approx. m2	Notes
4	RECORDS BUILDING	NO	180	<p>Large building ideal for open plan office and/or storage. Ground floor and small mezzanine. Double door access to loading bay (car park) Built: 1960 Facilities: Power, lights, fire extinguishers</p> <p>Current status: Watertight, contains compactuses, some other articles. Under licence to Sutherland Shire Historical Society for six months for storage of artefacts.</p> <p>Building contains fibrous cement sheeting, which is non-friable and stable.</p>

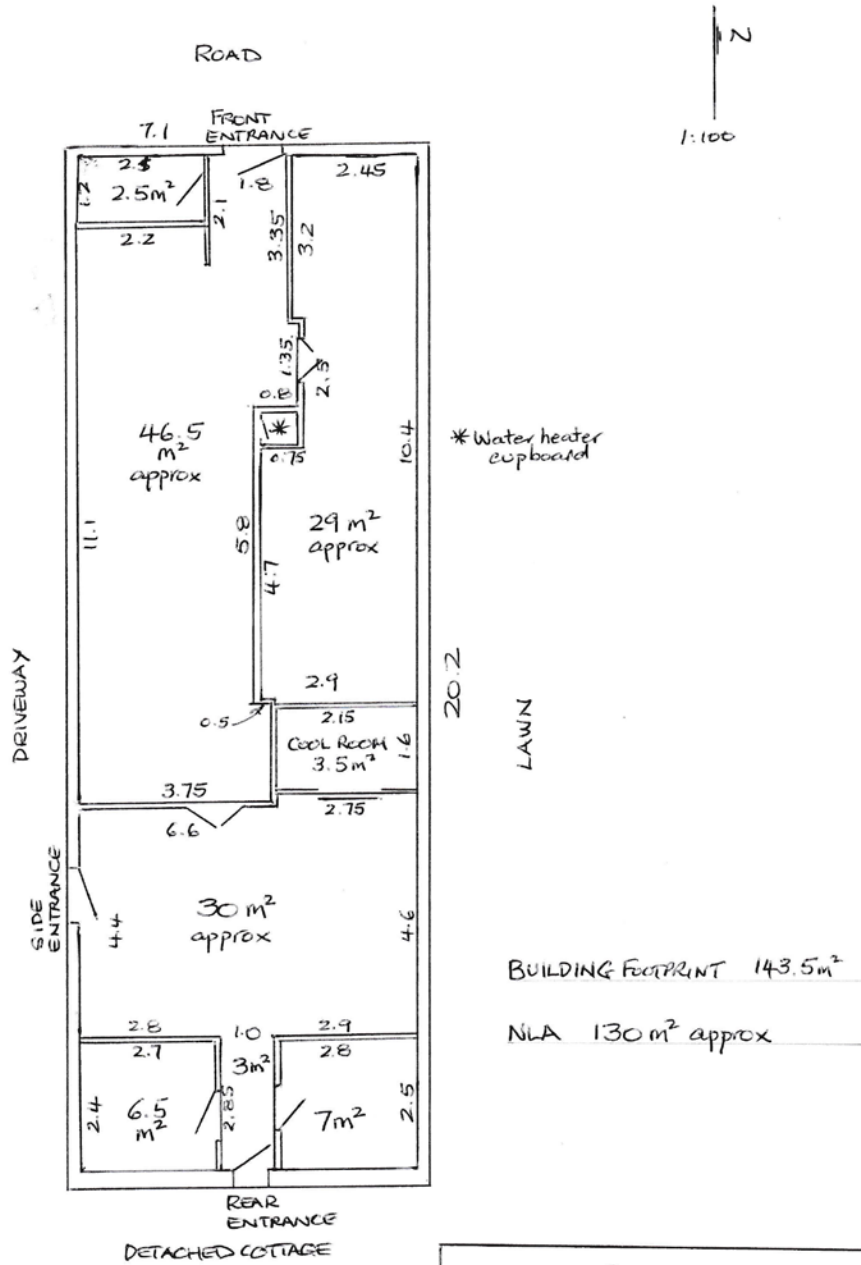


BUILDING FOOTPRINT	178 m ²
NLA Ground Floor	157
Mezzanine	20
Stairs	4
Under roof attic	n/m

HUNGRY POINT RESERVE
BUILDING 4
 P.C. KELLY Surveyor April 2019


Measurements and areas shown are approximate only

6a	FISHERIES HATCHERY LAB	Heritage Listed	143 sqm approx	<p>Recently renovated, heritage listed state-of-the-art fisheries laboratory. Built: 1904, interior fitout c2000</p> <p>Facilities: Power, lights, water, water heater, laboratory fittings, freezer room, fire extinguishers.</p> <p>No asbestos material recorded.</p>	
----	------------------------	-----------------	----------------	--	---

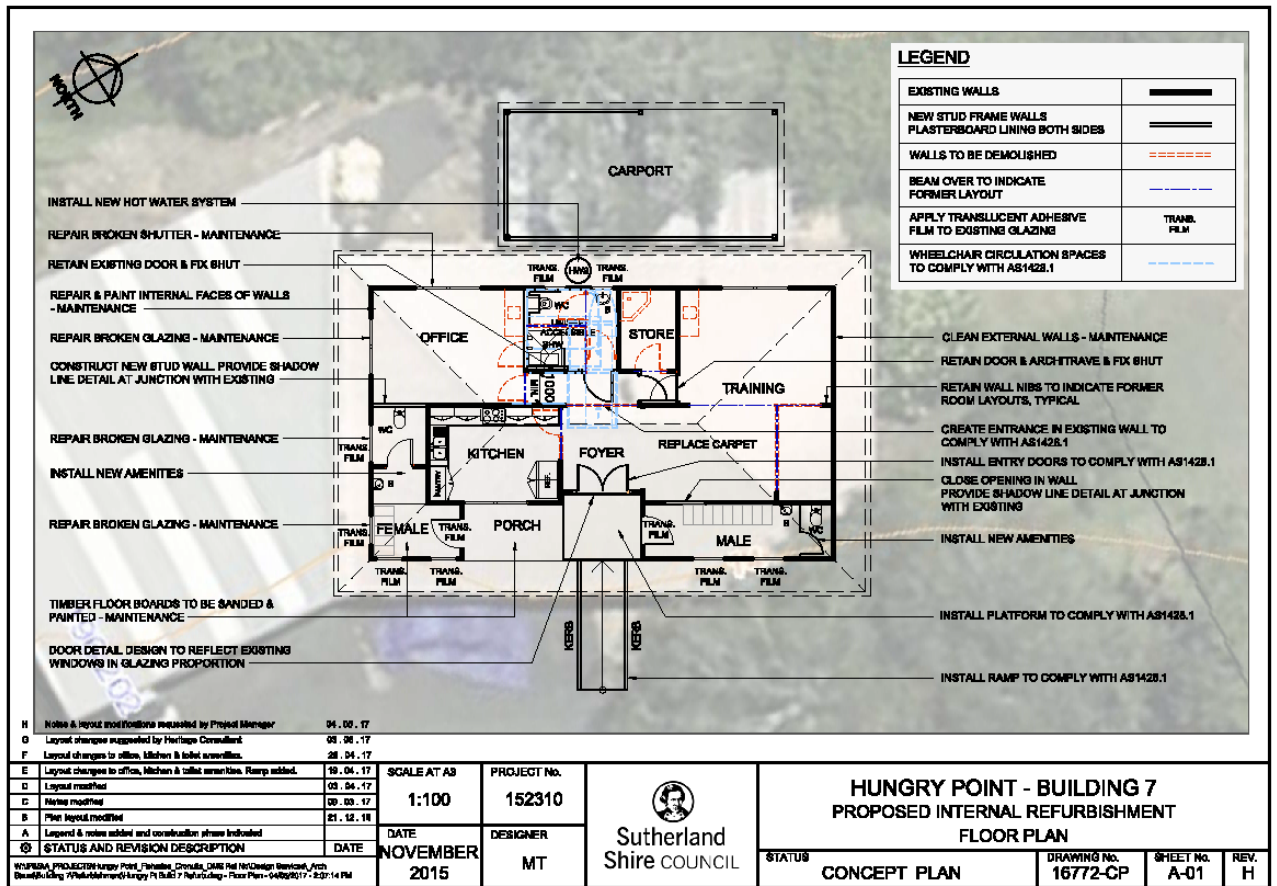



HUNGRY POINT RESERVE
 BUILDING 6a
 P.C Kelly Surveyor April 2019

Measurements and areas shown are approximate only



7	FISHERIES SCHOOL	Heritage Listed	123 sqm approx	<p>The building is easily accessible within the site. Ideal for offices.</p> <p>Facilities: Power, water, toilets, kitchen Built: 1943 Current status: Water tight, unoccupied, some fittings.</p> <p>Contains some fibreboard and fibrous cement sheeting, which is non-friable and stable.</p>	
---	------------------	-----------------	----------------	--	---

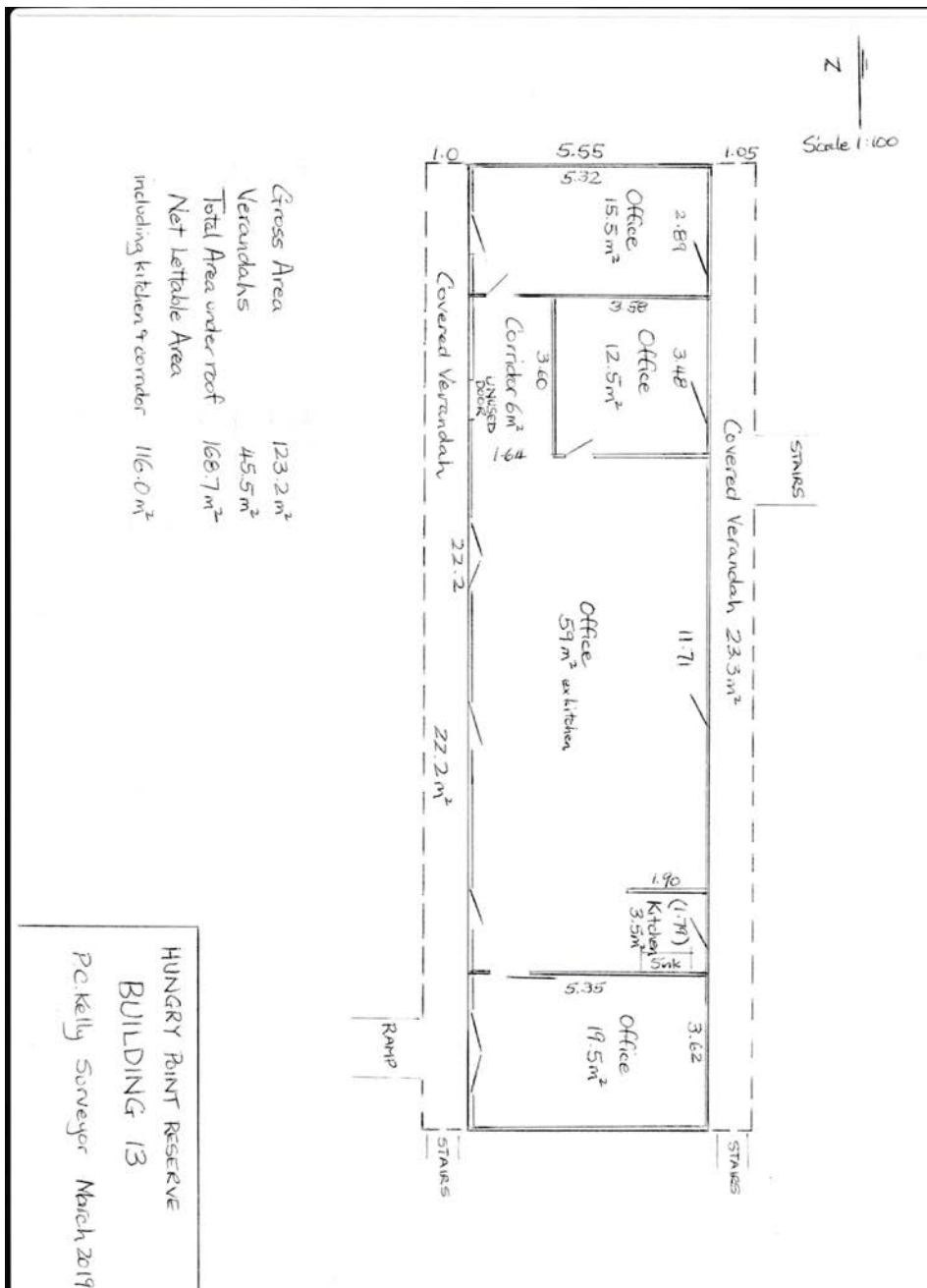
Note that the diagram below shows potential alterations and maintenance that have not been undertaken. The plan is not to scale and dimensions are not shown.



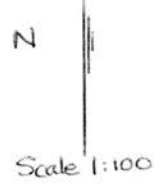
10	FISHERIES SCHOOL, WATERFRONT LAB	Not Heritage Listed	169 sqm approx	<p>Building adjacent to the heritage listed Aquaria Building 23. Highly accessible location from the water's edge. Lab, office and meeting facilities. Built: 1946, refurbished c2010 Facilities: Office, water, kitchenette.</p> <p>Contains external fibreboard eve lining, which is non-fibrous and stable. Some scattered fibrous cement sheeting debris in ceiling space, which is non-friable but unstable.</p>	
----	-------------------------------------	---------------------------	-------------------	---	---

No plan available

13	FORMER MIGRANT HOSTEL (Nth)	Heritage Listed	124	<p>A pair of long and narrow shaped weatherboard buildings with single person width verandas. These are rare examples of Post-war Migrant Hostel accommodation. Excellent views. Ideal for individual and open plan offices. Facilities: Power, water. Built c1949, internal fitout c2000 Current status: Some roof leaks being rectified, unoccupied.</p> <p>Building 13: Scatted fibrous cement sheeting debris in ceiling areas and underfloor. Non-friable but unstable. Building 15: no reported asbestos material.</p>	
15	FORMER MIGRANT HOSTEL (Sth)	Heritage Listed	122		




Measurements and areas shown are approximate only



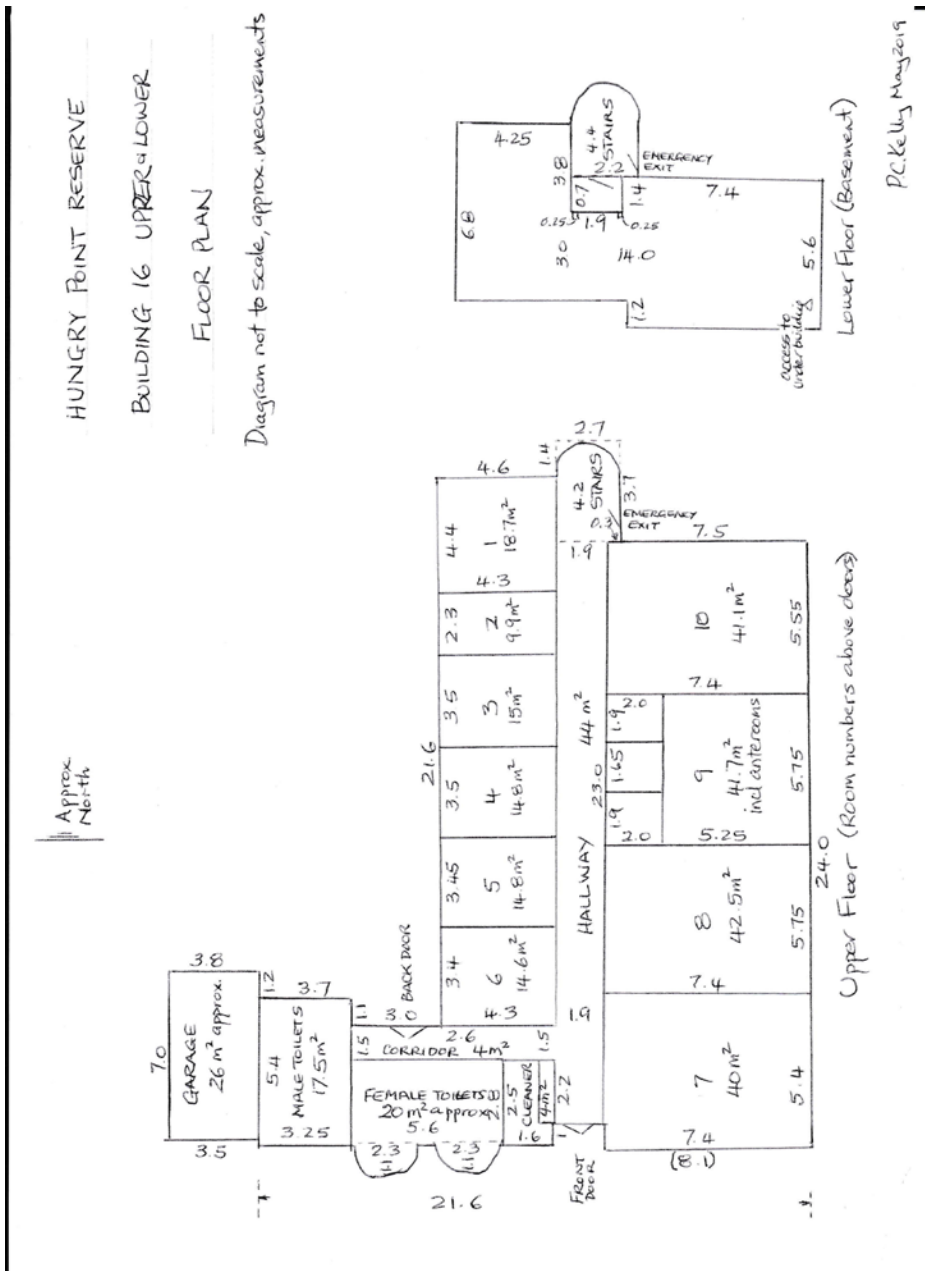
Gross Area	122 m ²
Verandahs	44 m ²
Total Area under roof	166 m ²
Net lettable Area	111.5 m ²



HUNGRY POINT RESERVE
 BUILDING 15
 Pe Kelly Surveyor March 2019

Measurements and areas shown are approximate only

16	COMMERCIAL MANAGEMENT (2 levels)	Not Heritage Listed	385 sqm approx	<p>First noticeable building upon arrival to site. The location is highly accessible. Ideal for several individual and open plan offices. Basement of 63 sqm for storage.</p> <p>Facilities: Water, toilets, shower, kitchen, some internal fittings, legacy fit-out.</p> <p>Built: 1970, updated fitout</p> <p>Current status: Water-tight, occupied.</p> <p>Fibrous cement sheeting and fibreboard at entrance and in cleaner's room, non-friable and stable. Millboard building debris under basement floor, which is unstable.</p>	
----	----------------------------------	---------------------	----------------	--	---

The plan below is diagrammatic and not to scale. It shows both internal and external dimensions. All measurements and areas shown are approximate.



19	DIVE STORE	Not Heritage Listed	45 sqm approx	<p>Building adjacent to the heritage listed Aquaria Building 23. Highly accessible location from the water's edge. Ideal for marine storage.</p> <p>Facilities: Power, water, freezers. Built: 1994 Current status: Water-tight, unused.</p> <p>No asbestos recorded.</p>	
23	FISH POND and AQUARIA	Heritage Listed	Est. 700	<p>An important element of the 1904 Hatchery. Large (approx. 30x10x3m deep), Heritage-listed pool with excellent flow-through seawater. Ideal for all sorts of research into marine species. Also, an aquaria room with individual sea water piping ideal for smaller scale experiments.</p> <p>Facilities: Aquaria room, excellent sea water from header tank (building 21) and pump shed (building 20). Updated fencing. Built: 1904 Current status: Unused, poor water condition in the pool, pool not water-tight.</p>	

No plans available

Note that A4 size copies of plans shown in this document are available on request to eoi@hungrypoint.com.au